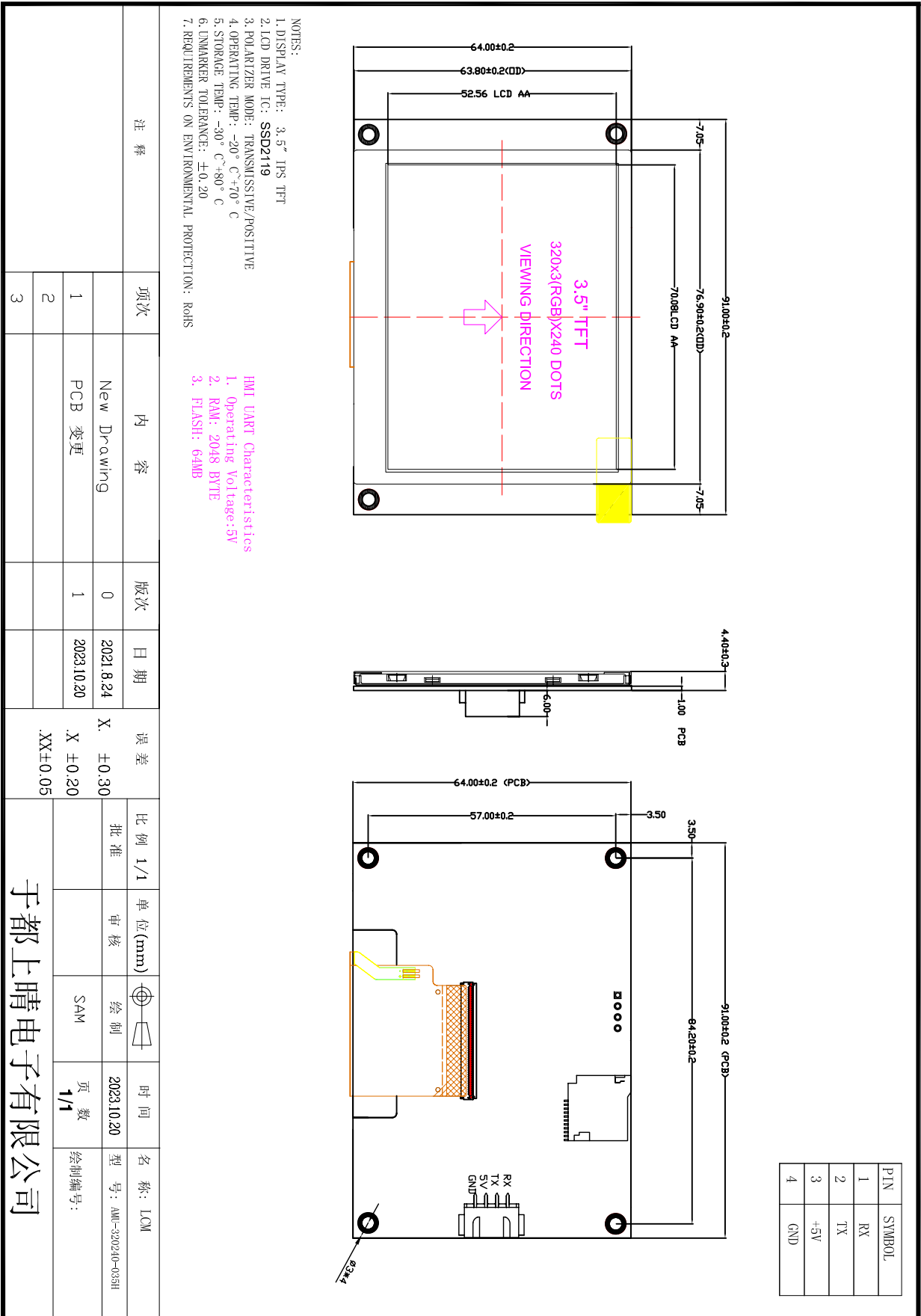




# Specification for Approval

**Customer:** \_\_\_\_\_

**Model Name:** AMU-320240-035H-F



• **General Information**

ITEM	STANDARD VALUES
LCD type	3.5" TFT
colors	65K (65536)
Module size	91(L)X64 (W)X3.65(H)
TFT Active area	70.08mm (L) ×52.56mm (W)
Dot arrangement	320(RGB)×240
Touch Type	-
Back Light	LED
B/L Life Time	>30,000 h
Luminous Intensity for LCM	300 Cd/m <sup>2</sup>
Weight	TBD

• **DC Characteristics**

ITEM	Test condition	MIN	TYP	MAX	Unit
Supply Voltage		4.75	5	7	V
operating current	VCC=+5V,	—	85	—	mA
	SLEEP Mode	—	20	—	mA

• **Operating temperature, Contents of Reliability Tests**

ITEM	Test condition	MIN	TYP	MAX	Unit
temperature operating	5V	-20	25	70	°C
Temperature Storage	—	-30	25	85	°C
Humidity Operation	25°C	10%	60%	90%	RH

• **Interface parameter**

ITEM	Test condition	MIN	TYP	MAX	Unit
serial baud rate	standard	-	115200	-	bps
Serial output level (TXD)	output 1, Iout=1mA	3	3.2	—	V
	output 0, Iout=-1mA	—	0.1	0.2	V
serial output level (RXD)	output 1, Iout=1mA	2	3.3	5	V
	output 0, Iout=-1mA	-0.7	0	1.3	V
UART configuration	Data bits: 8, Parity: None, Stop bits: 1				
Connector	XH-4P-2.54				
SD interface	(FAT32 file format) maximum support 2G MicroTF				



**• Memory parameter**

Memory type	parameter	MIN	TYP	MAX	Unit
FLASH Memory	Image storage space	—	64	—	M-bit

**Note: For more information about the programming, please refer to the Command Instruction.**