

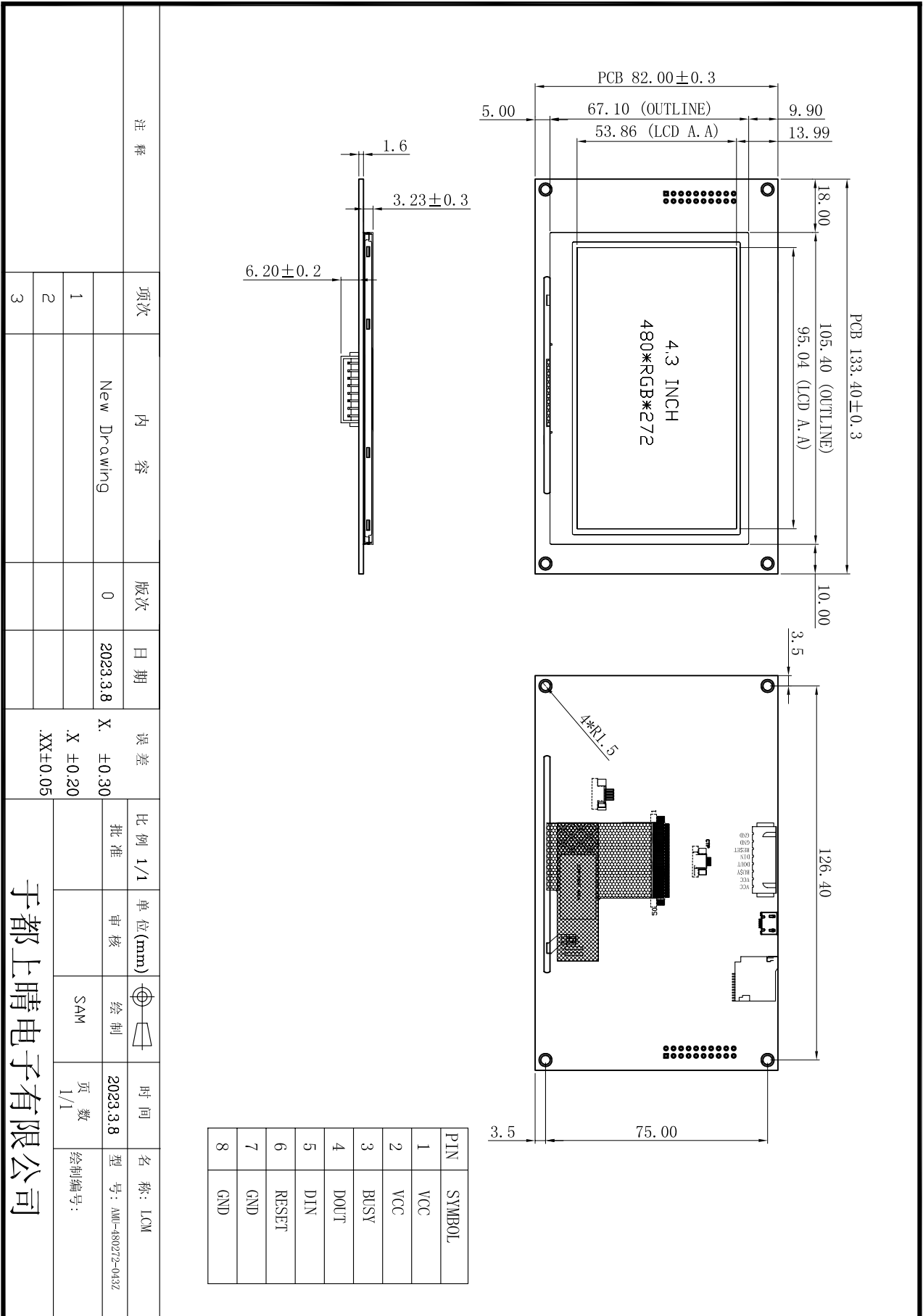


Specification for Approval

Customer: _____

Model Name: _____

| Supplier Approval | | | Customer approval |
|-------------------|--------------|-------------|-------------------|
| R&D Designed | R&D Approved | QC Approved | |
| Peter | Peng Jun | | |



| 项次 | 内 容 | 版次 | 日期 | 误差 | 比例 | 单位(mm) | 审核 | 绘制 | 时间 | 名称 |
|----|-------------|----|----------|----------|-----|--------|----|-----|----------|-----|
| 1 | New Drawing | 0 | 2023.3.8 | X. ±0.30 | 1/1 | | | SAM | 2023.3.8 | LCM |
| 2 | | | | X. ±0.20 | | | | | | |
| 3 | | | | .XX±0.05 | | | | | | |

于都上晴电子有限公司

General Information

| Product Parameters | |
|------------------------------|---|
| Model | AMU-480272-043Z-D |
| Series | Basic |
| Core processor | ARM926EJ-S 32-bit RISC CPU with 8KB I-Cache & 8KB D-Cache |
| Operating system | None, operation upon power-on, FPGA pure hardware display driver |
| Protocol | AMSON configure command set (Parts can be upgraded to be compatible with MODBUS) |
| Size | 4.3 inch |
| Resolution | 480x272 |
| Memory space | 1Gbit |
| Font library | ASCII, GBK, GB2312, UNICODE libraries with various dot matrices. User-definable display font. |
| Image storage | Store various images. |
| Color | 16.7M color, 24-bit RGB |
| Voltage | 5-26V (error±0.2V) |
| Communication interface | RS485/ RS232/TTL (TTL level by default) |
| Connector specification | XH2.54-8P |
| Image download | Support USB/ SD card/ UART, USB for R&D, SD download for production. |
| Real-time clock (RTC) | Support countdown, timer, year-month-day display |
| Active area (mm) | W x H = 95.04 x 53.86 |
| Dimension (mm) | W x H x T = 133.40 x 82.00x 4.83 |
| Software for master computer | - |
| AV input | Not supported |
| Audio | Not supported |
| Video | Not supported |
| Ethernet | Not supported |
| Wi-Fi | Not supported |

Core competitiveness

| | |
|-----------------------|---|
| Learning cycle | Get familiarized with development environment within 30 minutes, complete human-machine interaction design within 3 days. |
| Startup time | Operation upon power-on, no system loading time |
| Configuration control | Various configuration controls are available, including button, text, progress bar, sliding block, instrument, animation, data record |
| Data record | Data record can be sent to SD card. |
| Remote upgrade | User host upgrades screen firmware or project images remotely |
| Information push | Some models support cloud push video or advertisement display or communication display of mobile APP and screen |
| Layer technique | The system has multiple built-in display layers to provide higher switching speed |
| Reliability | The product passes the tests of high and low temperature, ESD, group pulse and radiation by industrial standards. |
| Life cycle | Traditional brand processors are adopted, so there will not be supply shortage for years. |

Touch panel

| | |
|------------------|---|
| Touch panel type | - |
| Mode | - |
| Surface hardness | - |
| Transmittance | - |

LCD display

| | |
|---------------------------------|------------|
| Display type | TFT LCD |
| Backlight tube | LED |
| Brightness (cd/m ²) | 400 |
| Backlight life (h) | 20000 |
| Contrast | 500:1 |
| Gray Scale Inversion Direction | 6 O'clock |
| Eyes Viewing Direction | 12 o'clock |

Environment and certificate

| | |
|-----------------------|--|
| Operation temp. | -20 to 70°C |
| Storage temp. | -30 to 80°C |
| Vibration test | Frequency: 10Hz~55Hz~10Hz Amplitude: 1.5MM X, Y, Z direction for total 3 hours |
| ESD test | Voltage: ±8KV, R:330Ω, C:150PF, Air Mode, 10times |
| High & low temp. test | Operation: 70°C±2°C × 96 hours Operation: -20°C±2°C × 96 hours Storage: 80°C±2°C × 96 hours Storage: -30°C±2°C × 96 hours |